

An isometric line-art illustration of an office floor plan, rendered in a light blue color against a darker blue background. The office is divided into several cubicles and open-plan areas. Each workstation is equipped with a computer monitor, keyboard, and mouse. There are several potted plants scattered throughout the space. A central area features a water cooler and a small table. The overall style is clean and modern, with a focus on geometric shapes and perspective.

TIMATE

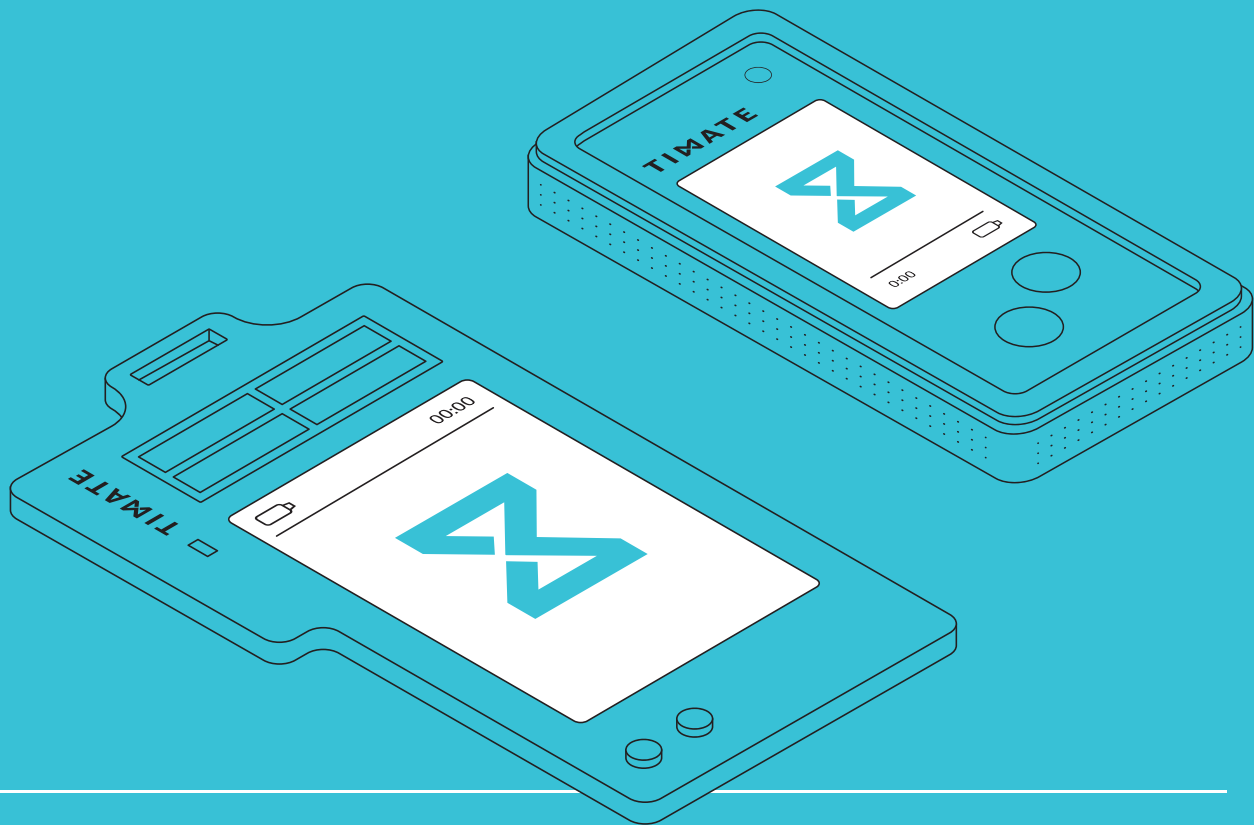
Your daily support at work



See what is really happening in your company

A modern company runs on real data and it can adapt to the changeable business environment by understanding the factors which impact its operations and by optimising them.

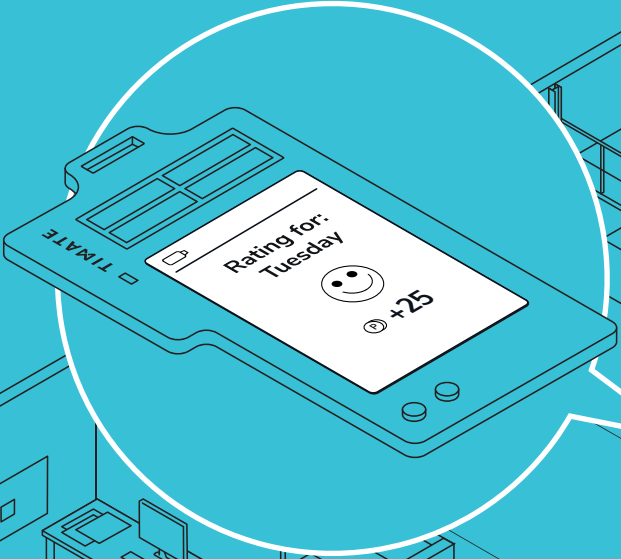
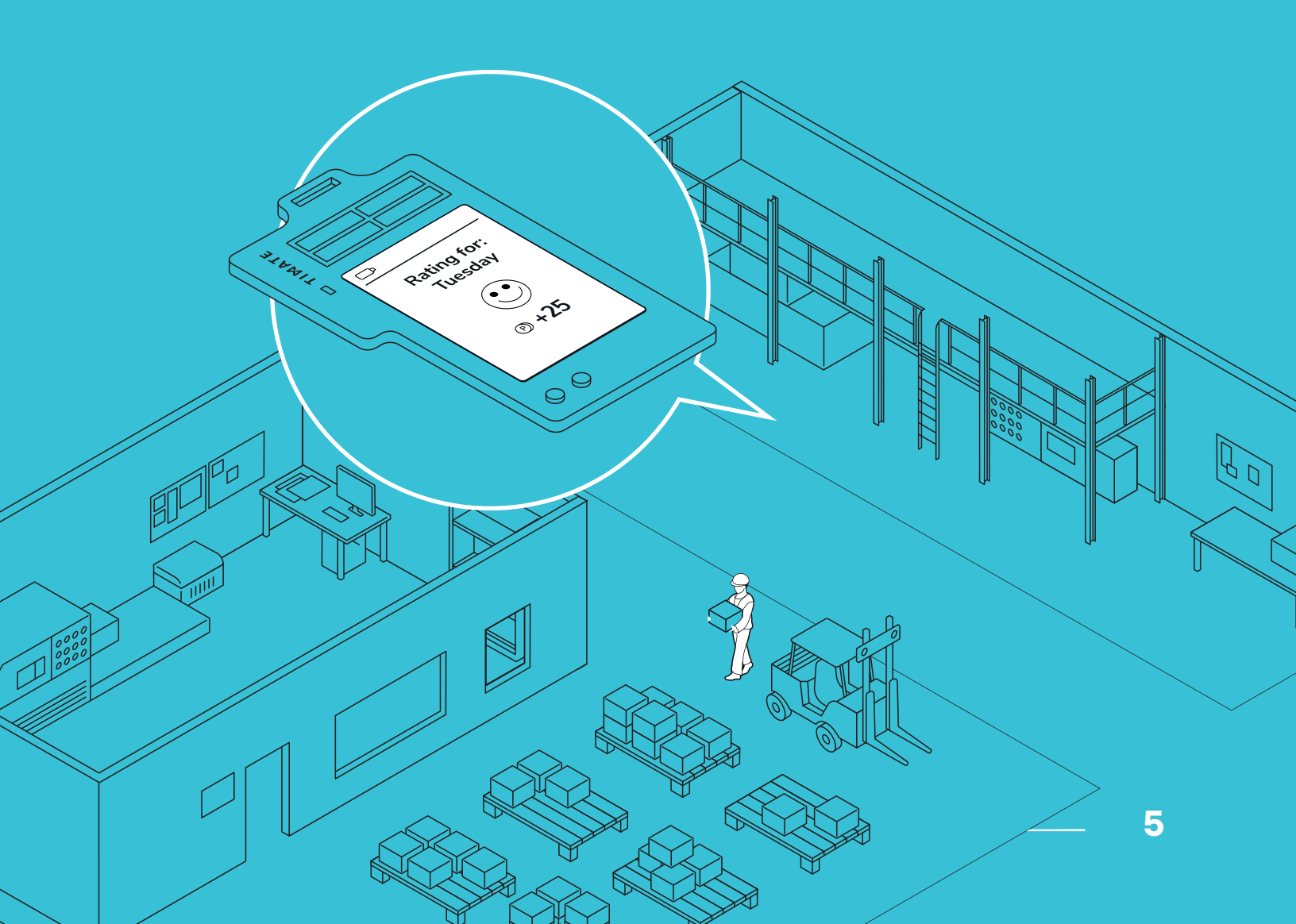
TIMATE offers a revolutionary approach to enterprise management. Drawing on the unique possibilities of the Internet of Things (IoT) and the Internet of Behaviours (IoB), the system collects, analyses and clearly presents all data regarding the activities of particular employees and teams. As a result, companies gain ongoing visibility of how they function and can quickly adjust production and business processes depending on the current needs and problems that must be solved. This means real benefits and considerable savings.



⌘ Assessment and motivation

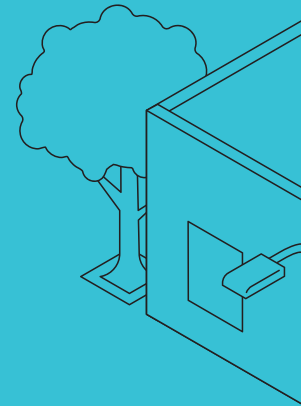
The employee assessment process is significant, as it allows to diagnose problems, implement changes and motivate teams. However, enterprises engage in this process not often enough, which makes its results fail to trigger activities that would boost employee motivations and optimize the way in which the business operates.

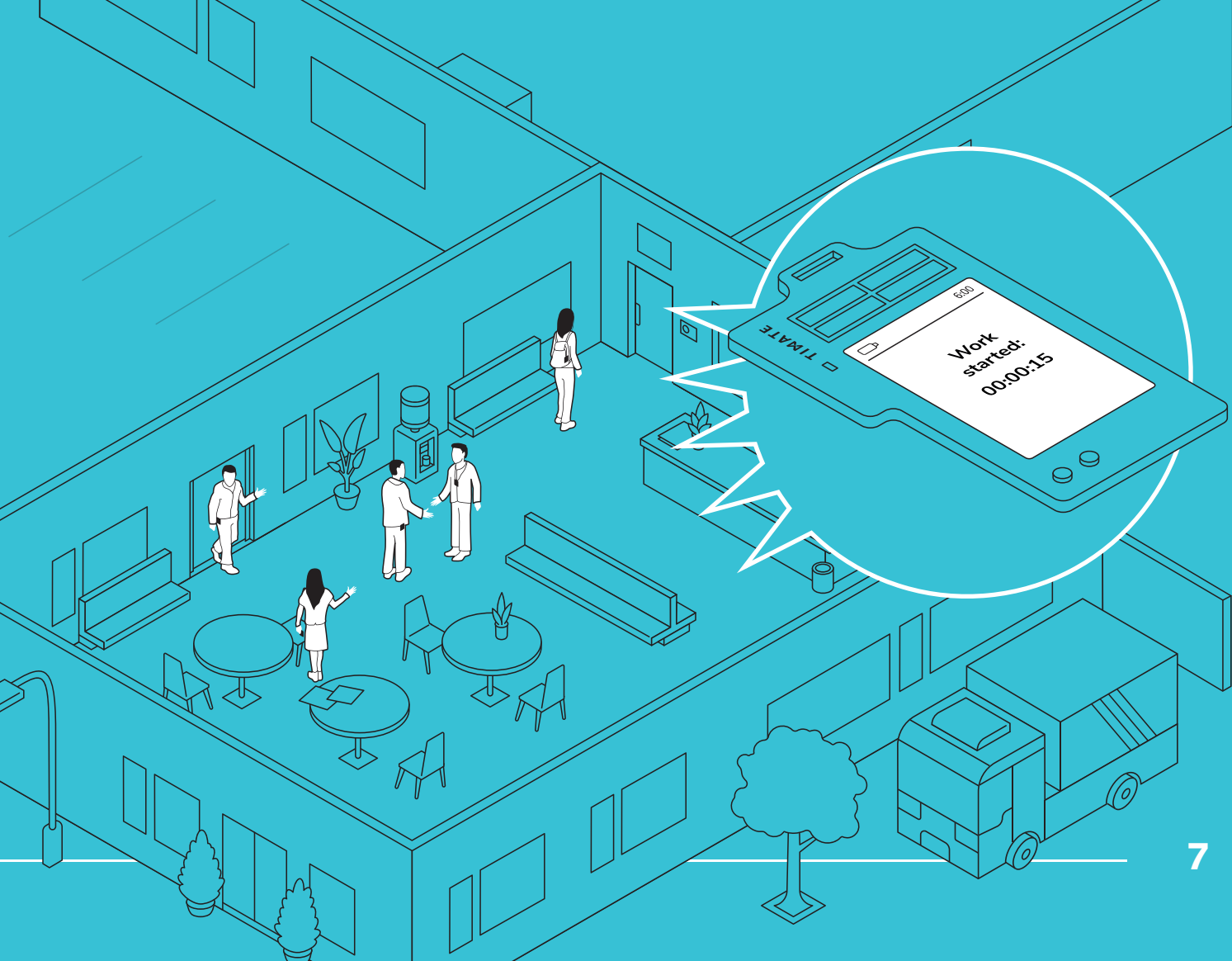
TIMATE changes that. The system enables automatic collection and analysis of data related to business operations, procedures and methods. The system uses such data to evaluate teams on an ongoing basis within six areas: time and attendance, use of the working time, safety, task performance, results and management. The assessments are displayed on the cards of employees and managers in the form of clear and easily understood pictograms.



⌘ Automatic recording of time and attendance

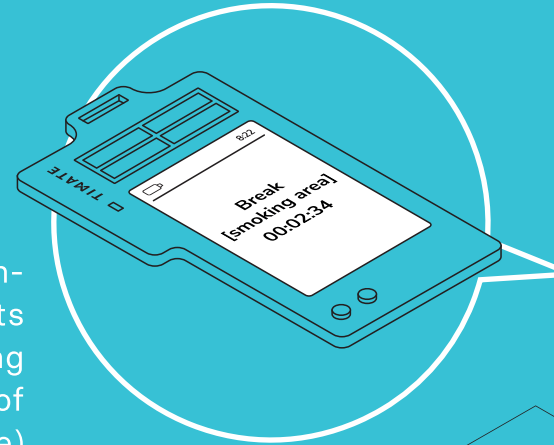
When a company uses **TIMATE**, there is no need for gates, turnstiles or readers. No need to wait in a line. Employees who have their cards on them simply enter the company premises. The system automatically records each entry and exit and it also measures the working time and the time used for breaks, while the employee does not have to do anything to activate or operate it. It's all that simple.





⌘ Use of the working time

TIMATE can do it. Once the employee enters the company premises, the system automatically collects reliable data on how the employee is actually using the time at work. The system recognizes the type of employee activity (whether they stand or sit or move) and the zone where the employee is currently located. Based on this measurement, the employer can easily analyse the use of the working time by employees.

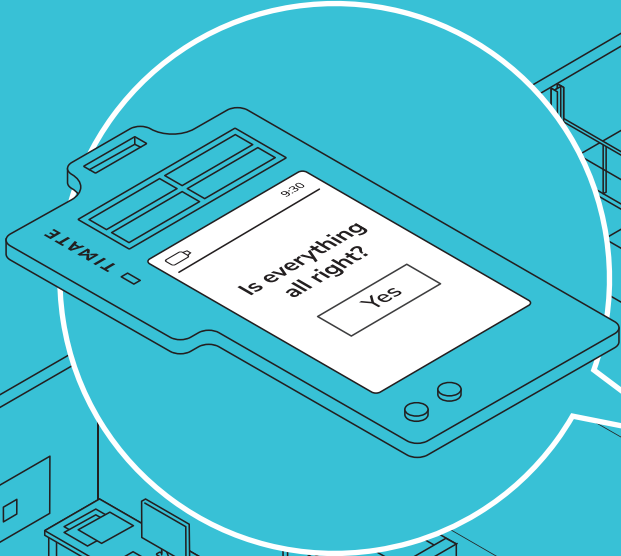
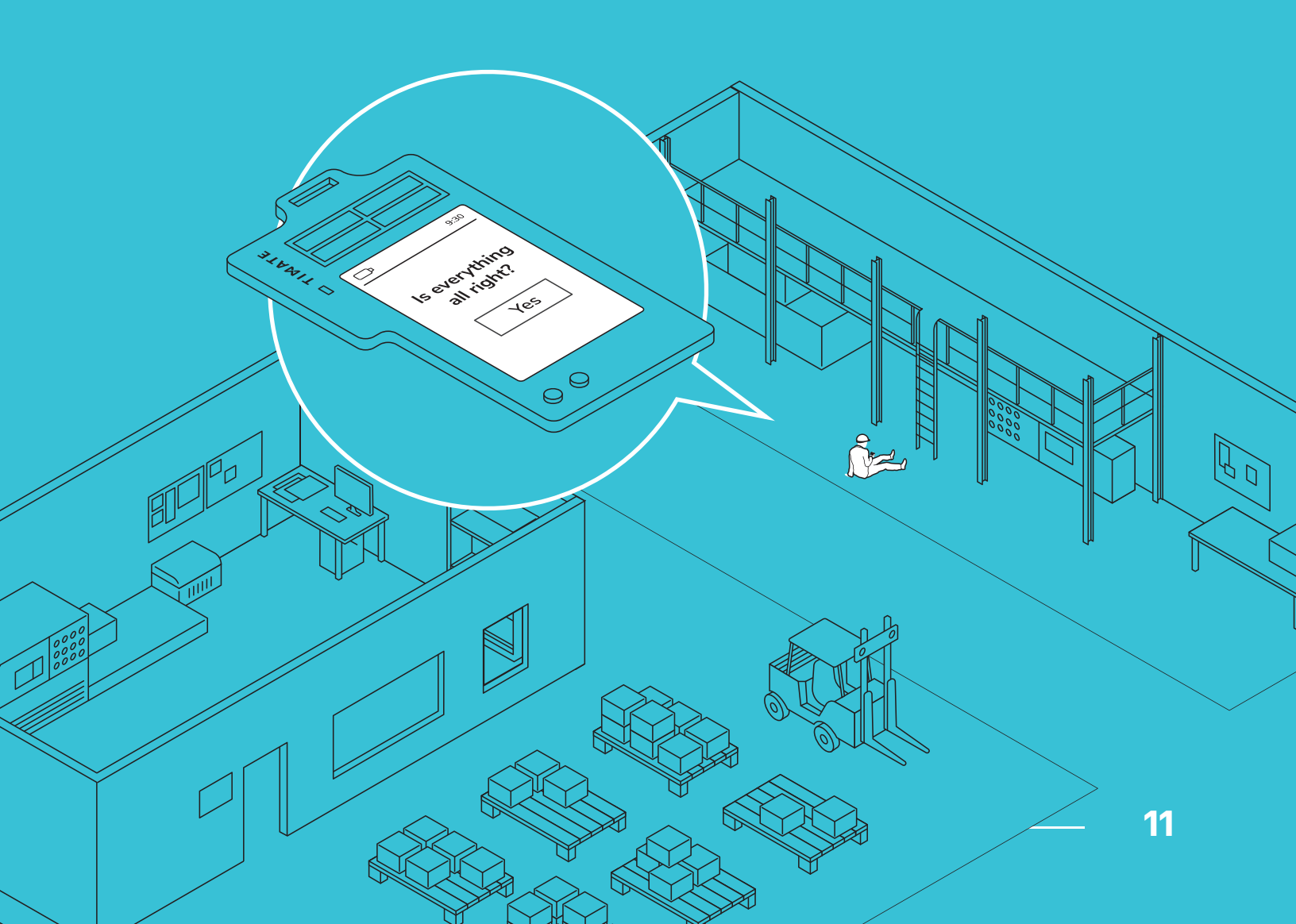




Security

One of the key features of the **TIMATE** system is accident monitoring. The system ensures correct employee identification and helps them if an unfortunate event has occurred. The sensors integrated in the device allow to detect the loss of consciousness and falls. Once an accident occurs, the relevant information is sent to the system and to a designated person via SMS. Employees can also use the emergency SOS button, while the messages displayed by the card remind them to use personal protective equipment.

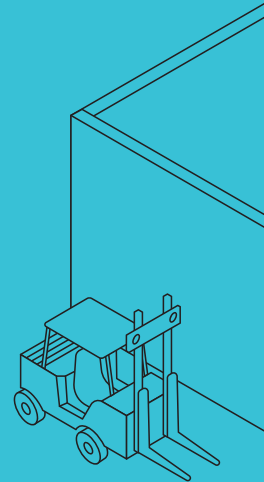
TIMATE also supports quick evacuation and checks whether all employees have left the danger zone and are now in a safe place.

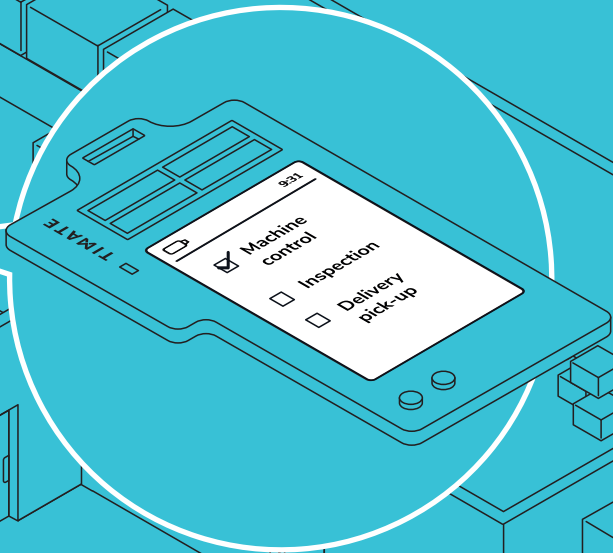
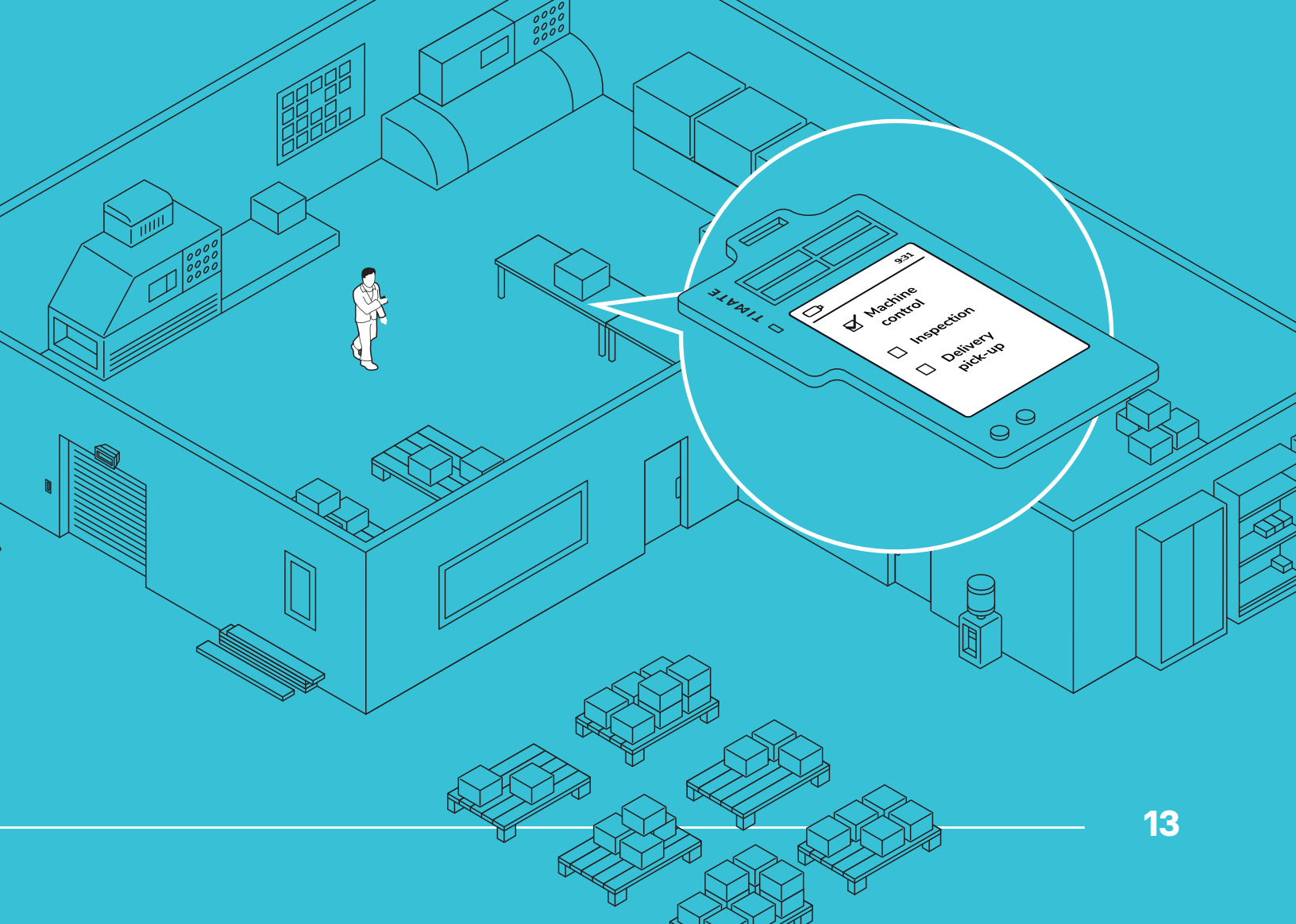


⌘ Task performance

Task registration and delegation often require manual completion of time-sheets or the use of special computer applications. However, some employees do not have access to electronic office devices.

TIMATE solves this problem in a simple and effective way. The card, which is also the employee ID, provides information about tasks delegated by the manager. The task description is displayed on the screen of the card. The card checks the time devoted to each task. This feature will also come useful for remote work.

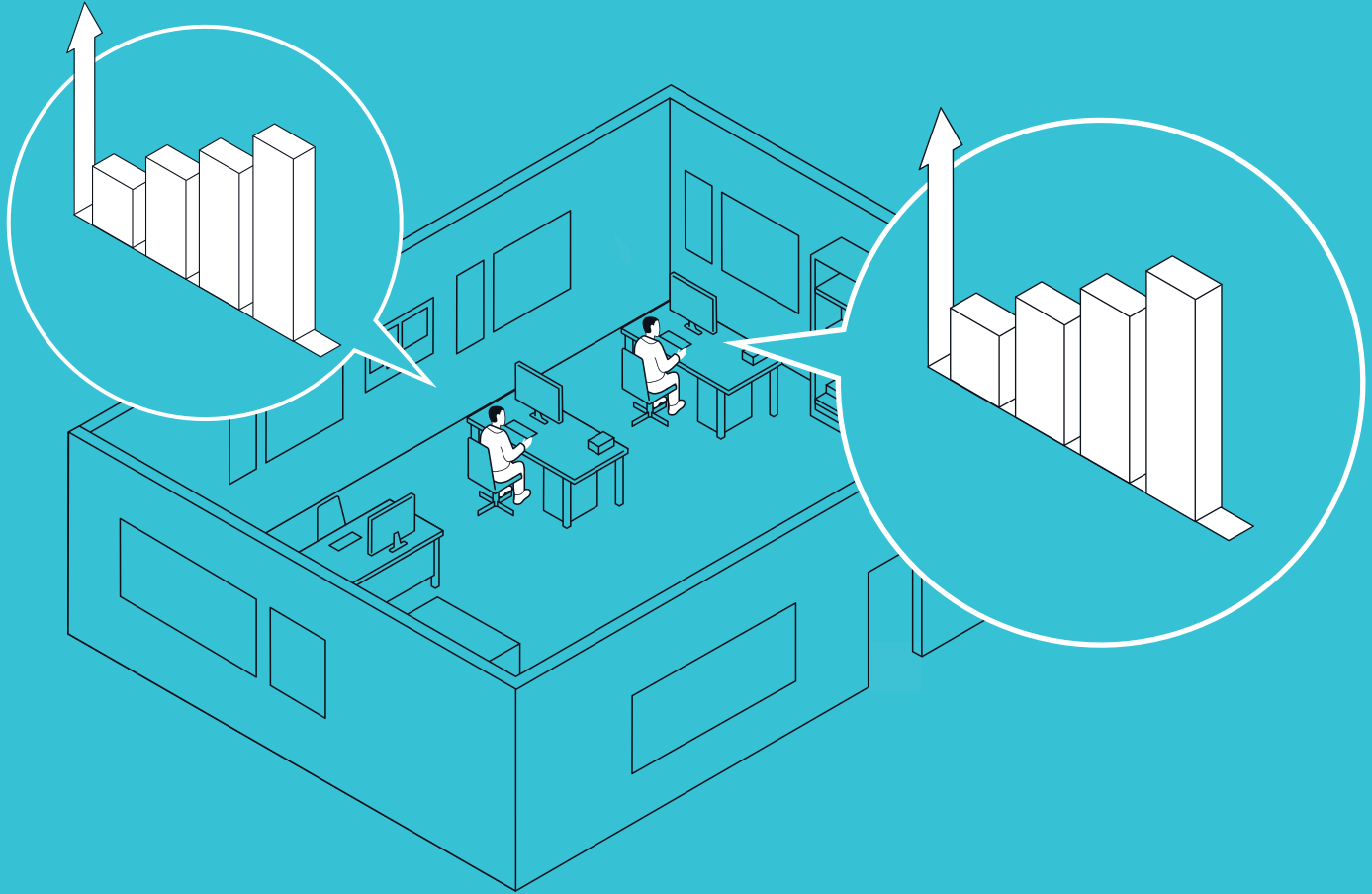




⌘ Measurement and achievement of results

Each company operates on the basis of with specific norms and plans, especially in the production sector. Often IT systems are used to prepare such plans. These are usually accessed only by managers. Meanwhile, employees do not know whether they have performed the plan or how much of the required result has already been delivered.

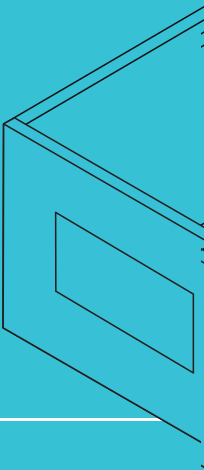
TIMATE changes that. The system can use a simple API to connect with other solutions in the enterprise. **TIMATE** helps to assess the extent to which the planned tasks have been performed and which part of the plan has been completed at any given time. The information about the results is displayed daily on employee's cards.

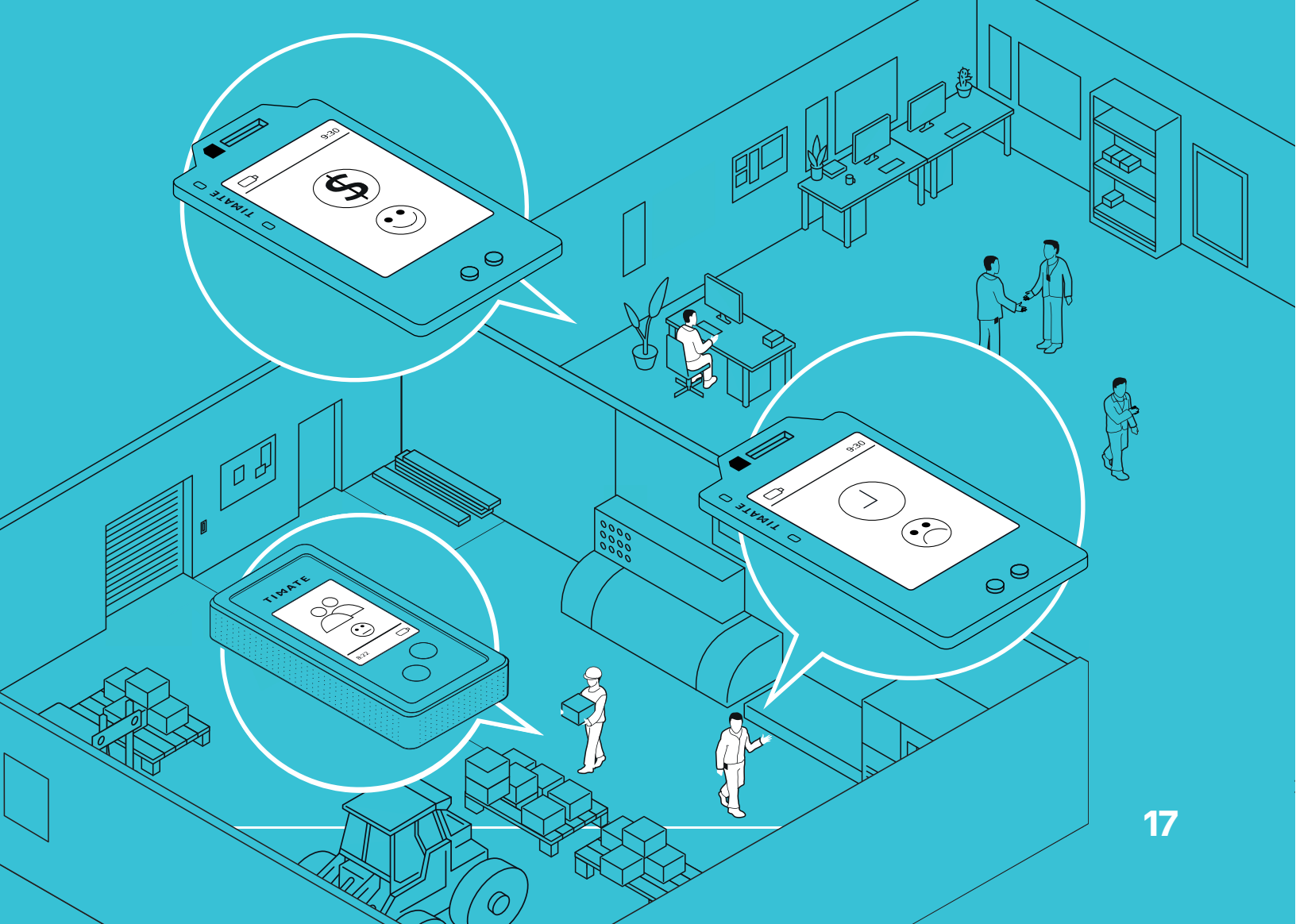


Team management

Any company's success depends both on the commitment shown by employees and on how they are managed. It is important to monitor the team's work and the load of duties as well as to respond in a timely manner to all situations which may disrupt the team's effectiveness and the business plan performance. Only the ongoing visibility and correct understanding of employees' activities allows to make production and business processes more effective and more cost-efficient.

Thanks to **TIMATE** managers get clear information about how their teams work on a daily basis. This information is displayed on the cards in the form of pictograms. The assessment covers particular areas of the team's operation and the team management level which pertains directly to the leader's managerial efficiency. If any area has a negative assessment, the manager can find information about the source of the problem in **TIMATE**.

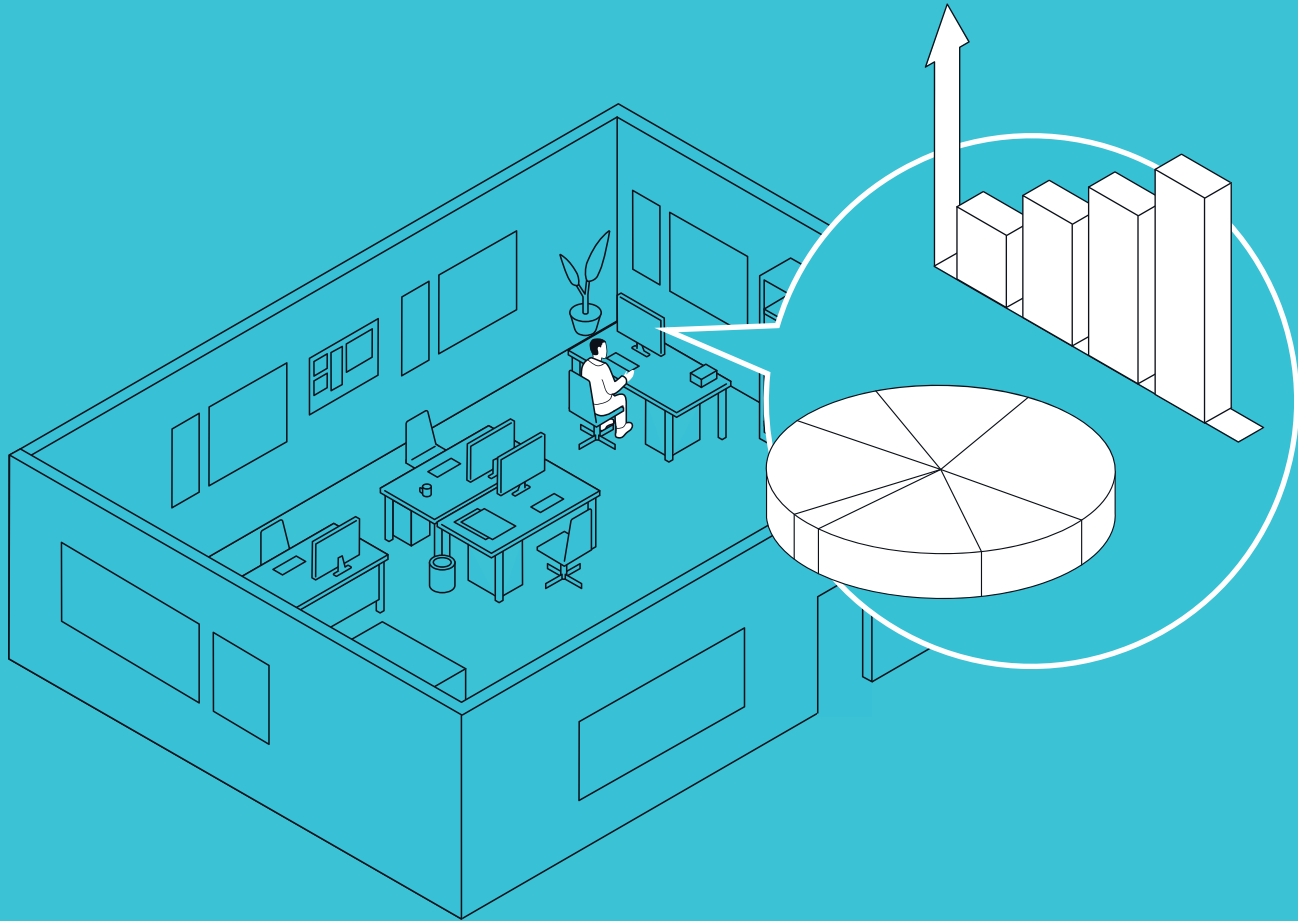




Data analysis (Big Data)

So far it has been impossible to compare data related to the use of the working time, since no system actually collected such data.

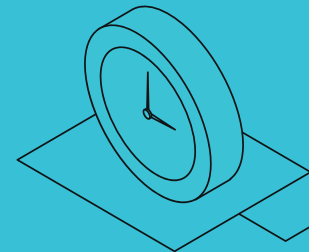
Based on our experience and the features provided by **TIMATE**, we have developed the working time use analysis module. It can quickly and easily respond to inquiries about what the employees are doing, whether they are safe and where they are currently working. The employer can use the collected data for comparisons and then use them to develop working standards or improve company processes. In addition, **TIMATE** contains several predefined indicators for easy data analysis.



Savings

Misused working time is not only an organisational problem, but it also leads to serious costs. Because of all the time that is wasted, companies lose the money they pay for ineffective actions.

Thanks to **TIMATE** it is possible to reduce such costs by up to 80%. How do we know that? We did annual surveys in companies which implemented our system. We determined that before the implementation each employee wasted the average time of 460 minutes per month. **TIMATE** eliminated or minimized the amounts of wasted time and money in all surveyed enterprises







Contact us:

tel. +48 32 346 11 08

contact@timatesystem.com

www.timatesystem.com